



Keeping in Touch

August - September 2017

St Mary's is an outward-looking and welcoming church, catering for all age groups, and helping the local community to experience God's love and grow in faith.

I wonder if you are familiar with our vision statement? It, along with our logo, is up in several places in church as a reminder of our vision for us to grow deeper in God's love and share that love with our local community. We first drew up that statement over six years ago as part of our looking at where we felt God was leading us as his church in this place. This process is often called Mission Action Planning, or MAP for short and is part of a process that the diocese encourages every parish to take part in. As a PCC we regularly review our MAP and try to discern where we feel God is leading us.



One of the things we discerned back then was the need to engage with the local community more and to consider how we might engage more effectively with younger families. To that end we held our very successful Summer Festival three years ago and since then the very popular Christmas Tree Festival, which I am delighted to say is going to take place again this year. We have had open days, musical concerts, art workshops, lent lunches, bible study groups, poetry groups and a variety of other special events. We inaugurated our all age service on the first Sunday of the month and in July we saw over 60 children and their parents enjoying our special teddy bear service, hunt and picnic. We have made good progress in the way we keep in touch with people by email and we have a great website and Facebook page as we seek to engage with modern culture. We now also run a twice monthly mums and tots group in the Memorial Hall in Welham Green. So much has gone on that is good and we have much to thank God for. However, we now need to look again at where we are and how we can both grow deeper in our faith and in number. To that end we are asking everyone to take time this summer to pray for our church and to ask God for guidance and wisdom as we look to the future.

The Psalmist writes;

“Unless the Lord builds the house, those who build it labour in vain.”

We need to allow God to lead and guide us in this. Rowan Williams once famously said that mission was seeing what God was doing and joining in. Can I therefore ask you all to join with me in praying particularly over the month of August for God to direct and

guide us so that we might grow his kingdom here in North Mymms? We will be handing out bookmarks with a helpful prayer on and, in addition to our individual prayers at home during the week, we will be including special prayers during our services. There will also be a special prayer tree in St. Catherine's chapel for you to add your own prayers for our church.

Following up on our praying, in September we will be asking everyone to help by answering some thought provoking questions that will be sent to everyone on our parish list. These can either be answered in paper form or online and can be done anonymously if people wish. We will also be asking the wider community another set of questions that we hope you will help us to get answers to by speaking to people you know or have contact with in local organisations and groups.

A small MAP group will then pull all of this together and hopefully we can then see what God is directing us to do and we can, in his strength, go forward and grow together. Let us fix our eyes on Jesus and trust in his grace and power as we embark on this journey together.

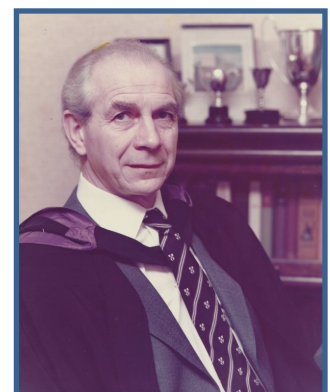
“God, our Heavenly Father make, we pray, the door of this church wide enough to welcome all who need human love and fellowship and a Father's care: but narrow enough to shut out all envy, pride and lack of love. Here may the tempted find help, the sorrowing receive comfort, and the penitent be assured of your mercy; and here may all your children renew their strength and go on their way in hope and joy, through Jesus Christ our Lord. Amen.

(Thomas Ken, Bishop of Bath & Wells, 1684-1711)



*Renée
Hooper
1915-2017*

Sadly we lost two very special people in June. As many of you will know Frank Maynard was the first Head-teacher at Chancellors School when it opened in 1964. On retiring in 1984 he moved into local politics and took a law degree. He and his wife Vibeke, who sadly died in 2010, were regular members of the congregation. Renée Hooper has also been a member of the St Mary's congregation for over 40 years always there to lend a hand putting together Mother's Day bouquets, dressing children for the crib service or offering a listening ear. We will miss them both and offer our thoughts and prayers to their families.



*Frank
Maynard
1925-2017*



On 2 July over 60 children and their families enjoyed a special teddy bear service with the YES choir, teddy bear hunt and teddy bear picnic. The day finished with the teddies taking a flight from the tower using a parachute. Some landings were gentler than others but every teddy made it safely down! We hope to be organising a reunion for the teddy bears soon. You can see lots of photos on the St Mary's Facebook page.



The Great Community Mural Competition 2017

Robin Elgar has been working with a community art group and St Mary's congregation to put together an entry for the Ecclesiastical Insurance Great Community Mural Competition celebrating the role of the church in the community. Winning entries will be combined to create a mural 10 metres long by 3 metres high which tour UK cathedrals.

Art Workshop

The next workshops will be held on Mondays 4th, 11th, 18th and 25th September – 2.00-4.00pm or 7.00-9.30pm. in St Michael's Room. If you are interested please contact Robin Elgar 01707 261810



Harvest Supper - 30th September

This year our Harvest Supper will be held on

Saturday 30th September 7.00pm

in St Michael's Room

Tickets -£10 includes a hot meal, dessert, wine or soft drink, coffee or tea.

If you are interested then please contact

Sue Crawley 07944 099239

or Brenda Harris beeharris@yahoo.co.uk



If you would like future copies of this Newsletter posted to you then please send your name and address to the

St Mary's Parish Office, North Mymms Park, Hatfield, AL9 7TN

Sunday Services at St Mary's

8.00am Holy Communion

9.30am Parish Eucharist

1st Sunday of the Month	10.30am	Family Service
	6.30pm	Choral Evensong
3rd Sunday of the Month	11.30am	Baptisms

Parish Registers for April and May 2017

Baptisms

18 June Ruby Grace Eleanor and Alis Yvonne Mary Langton-Venn

16 July Amelie Jane Cumberland
Espen Willem Wells Bouma

Weddings

1 July Kirsty O'Neil and Ryan Franklin-Smith

Funerals

12 June Funeral of Cyril John Foot

18 June Burial of Ashes of Neill Langton-Venn

19 June Burial of Ashes of Mrs Neil

30 June Funeral of Frank Maynard

3 July Thanksgiving Service for Zoe Sinclair

11 July Funeral of Renée Hooper

18 July Funeral of Iris Johnson

Contact us

Vicar

Rev Julia Boothby

Julia.boothby@btinternet.com

01727 822887

Churchwardens

Maritin Ferdinando

m.ferdinando@virgin.net

01707 260687

Office Administrator

northmymmschurch@btinternet.com

01727 825578

Parish Office open Tuesday & Wednesday

Gill Peplow

gillpeplow@outlook.com

01707 272265/07503 176871

www.stmarysnorthmymms.org.uk